



# Factory Direct Pipeline Products, Inc.

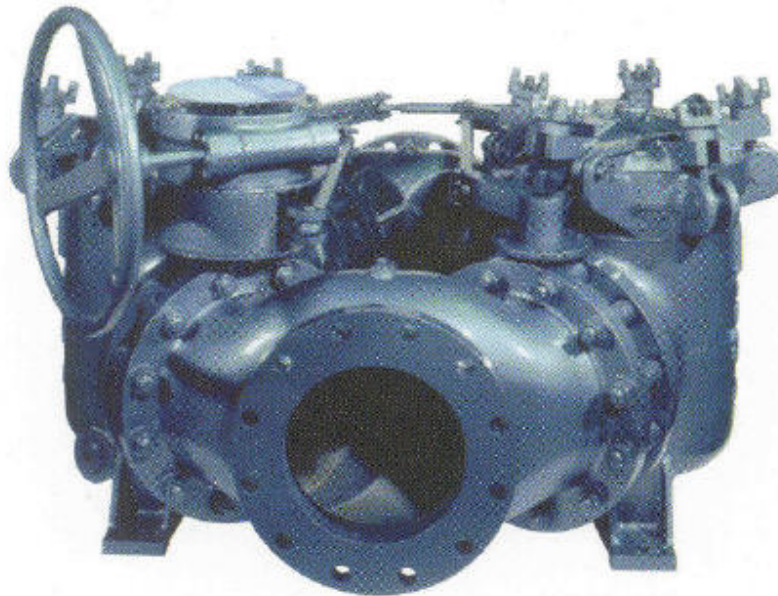


**Model TC Twin Chamber (Duplex) Strainers**  
**Sizes 10" to 18", constructed of cast iron with flange connections.**

The Model TC Duplex strainers remove damage causing particulate matter from the process media, and never have to be shut down for cleaning...the line can run continuously. When one strainer basket becomes full, flow is switched to the other. The first basket is removed, cleaned and is ready for use again.

Catalog Pages for Model TC Simplex Strainers	
<i>follow the link below for detailed information for each strainer</i>	
GPM Range	CAST IRON
979 - 6,390	<a href="#">10" - 18" Flanged</a>

These large size strainers use synchronized butterfly valves to switch the flow from one basket strainer chamber to another and never cause the flow to be shut off. Operation is quick and easy with the large, easy to use hand wheel...a few turns and the flow is diverted and the out of service basket is ready for cleaning.



This unique design has a straight through flow path that results in a very low pressure drop across the strainer. Another advantage of this design is that it is very compact and has a smaller profile than similar size strainers. Pleated (convoluted) type strainer baskets are used to increase the straining area while reducing size and weight of the basket and are a standard feature.

**Features**

**Options**

- Continuous flow - no shutdown for basket cleaning
- Compact butterfly valve design
- Quick opening covers
- Convoluted-design baskets
- Threaded drain
- Perforated or mesh stainless steel basket
- Vent
- Positive shutoff
- Ductile iron construction
- Basket perforations from 1/32" to 1/2"
- Basket mesh 20 or 40
- Monel baskets
- Vent valves
- Drain valves
- 1/4" NPT taps
- Pressure differential gauge and switch connections
- Magnetic basket inserts

We've taken a unique approach to this website. The basic ordering information is listed in chart form. Each strainer has its' own customizable datasheet, providing you with important specification information such as pressure drop, inlet velocity and screen velocity.

The suggested minimum and maximum flow range for each size strainer is included, these numbers are based upon maintaining a fluid velocity within 6 to 10 feet per second.

All you need to do to generate your printer-friendly custom datasheet is follow the link for the strainer you are interested in (opens in a new window), replace the default flow rate and Specific Gravity (Sg) values with your design values, and click the recalculate button at the bottom of the page.

Catalog Pages for Model TC Simplex Strainers	
<i>follow the link below for detailed information for each strainer</i>	
GPM Range	CAST IRON
979 - 6,390	<a href="#">10" - 18" Flanged</a>

- [Need Spare Parts? Click Here for a Complete Listing for the TC Series](#)
- [Click Here to open the Installation/Operation Manual for Model TC Strainers](#)
- [Click Here for assistance in writing a specification around Model TC's](#)