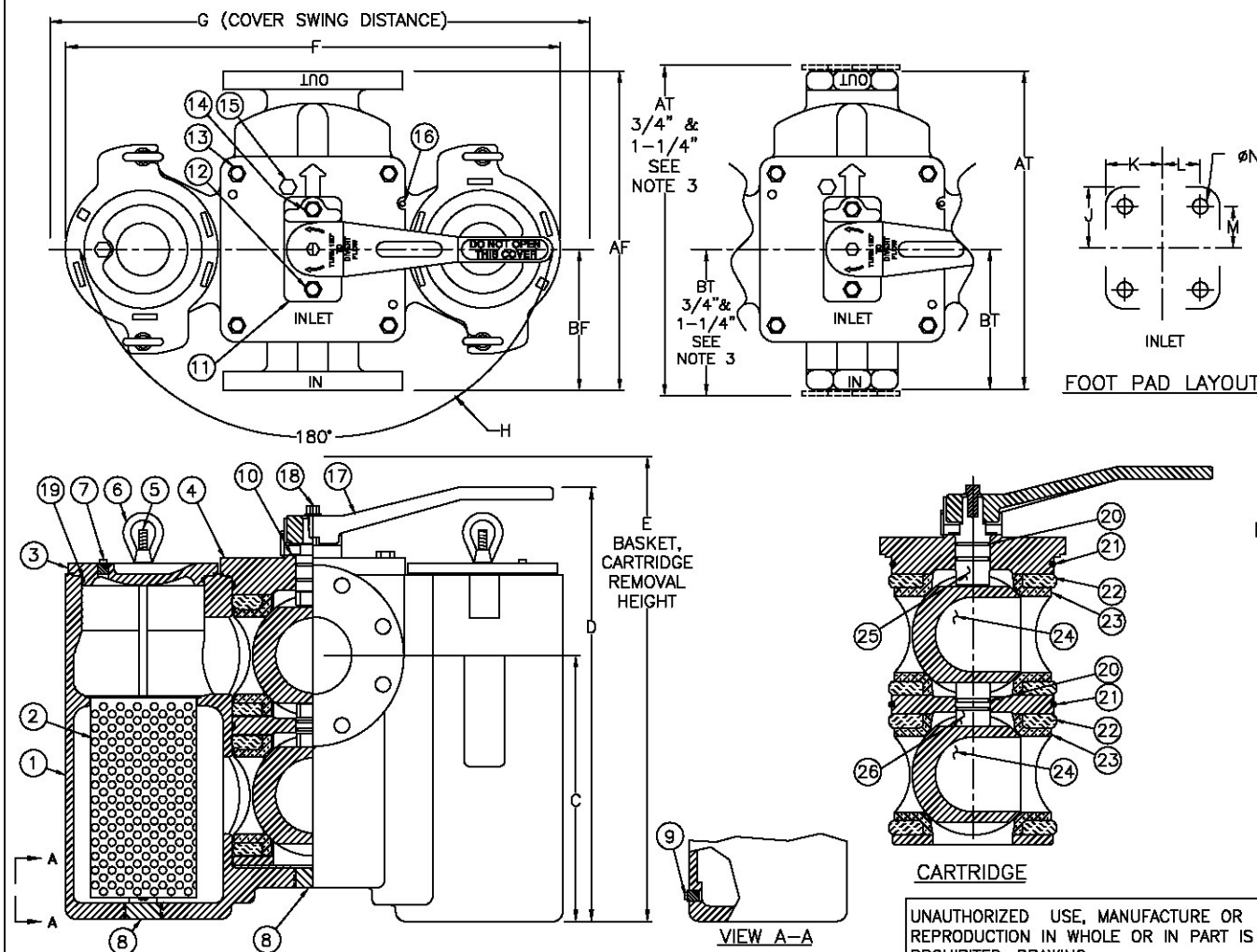


PIPE SIZE (NOMINAL) IN. MM.	AF±0.13		BF		AT±0.13		BT		C		D		E		F		G		H		J		K		L		M		N		STRAINER WEIGHT LBS. KGS.	STRAINER PART NO.
	IN.	MM.	IN.	MM.	IN.	MM.	IN.	MM.	IN.	MM.	IN.	MM.	IN.	MM.	IN.	MM.	IN.	MM.	IN.	MM.	IN.	MM.	IN.	MM.	IN.	MM.	IN.	MM.	IN.	MM.		
3/4 (20)					6.13 / 156	2.84 / 72	5.00 / 127	10.50 / 267	13.38 / 340	10.50 / 268	16.50 / 419	7.88 / 200	3.25 / 83	2.13 / 54	1.63 / 41	2.75 / 70	3/8 (10)	45 / 21	ST053007BT11TS													
1 (25)					5.50 / 140	2.53 / 64	5.00 / 127	10.50 / 267	13.38 / 340	10.50 / 268	16.50 / 419	7.88 / 200	3.25 / 83	2.13 / 54	1.63 / 41	2.75 / 70	3/8 (10)	43 / 20	ST053010BT11TS													
1 (25)	6.88 / 175	3.19 / 81					5.00 / 127	10.50 / 267	13.38 / 340	10.50 / 268	16.50 / 419	7.88 / 200	3.25 / 83	2.13 / 54	1.63 / 41	2.75 / 70	3/8 (10)	49 / 22	ST053010BF11TS													
1-1/4 (32)					8.75 / 222	3.75 / 95	6.81 / 173	12.75 / 324	17.00 / 432	13.25 / 330	19.88 / 505	7.88 / 200	3.25 / 83	2.13 / 54	1.63 / 41	2.75 / 70	3/8 (10)	97 / 44	ST053012BT11TS													
1-1/2 (40)					7.50 / 190	3.25 / 83	6.81 / 173	12.75 / 324	17.00 / 432	13.25 / 330	19.88 / 505	7.88 / 200	3.25 / 83	2.13 / 54	1.63 / 41	2.75 / 70	3/8 (10)	94 / 43	ST053015BT11TS													
1-1/2 (40)	9.38 / 238	4.31 / 109					6.81 / 173	12.75 / 324	17.00 / 432	13.25 / 330	19.88 / 505	7.88 / 200	3.25 / 83	2.13 / 54	1.63 / 41	2.75 / 70	3/8 (10)	106 / 48	ST053015BF11TS													
2 (50)					10.00 / 254	4.50 / 114	8.38 / 213	15.50 / 394	21.75 / 552	17.38 / 441	26.25 / 667	10.63 / 270	4.69 / 119	2.50 / 64	1.81 / 46	4.00 / 102	5/8 (16)	185 / 84	ST053020BT11TS													
2 (50)	10.63 / 270	4.63 / 117					8.38 / 213	15.50 / 394	21.75 / 552	17.38 / 441	26.25 / 667	10.63 / 270	4.69 / 119	2.50 / 64	1.81 / 46	4.00 / 102	5/8 (16)	197 / 89	ST053020BF11TS													
2-1/2 (65)					10.00 / 254	4.50 / 114	8.38 / 213	15.50 / 394	21.75 / 552	17.38 / 441	26.25 / 667	10.63 / 270	4.69 / 119	2.50 / 64	1.81 / 46	4.00 / 102	5/8 (16)	185 / 84	ST053025BT11TS													
2-1/2 (65)	10.75 / 273	4.69 / 119					8.38 / 213	15.50 / 394	21.75 / 552	17.38 / 441	26.25 / 667	10.63 / 270	4.69 / 119	2.50 / 64	1.81 / 46	4.00 / 102	5/8 (16)	216 / 98	ST053025BF11TS													
3 (80)	13.50 / 343	5.93 / 151					8.88 / 226	18.00 / 457	26.50 / 673	22.75 / 578	35.00 / 889	12.00 / 305	4.69 / 119	2.50 / 64	1.81 / 46	4.00 / 102	5/8 (16)	336 / 153	ST053030BF11TS													
4 (100)	16.00 / 406	7.06 / 179					13.25 / 337	21.63 / 549	33.00 / 838	24.75 / 629	36.75 / 933	12.00 / 305	5.19 / 132	3.94 / 100	3.25 / 83	4.50 / 114	5/8 (16)	461 / 209	ST053040BF11TS													



ITEM	PART NAME	MATERIAL	QTY.
1	BODY	ALUMINUM BRONZE, B148	1
2▲	BASKET	STAINLESS STEEL, 316	2▲
	PERF. DIA. MESH SIZE		
3	COVER	ALUMINUM BRONZE, B148	2
4	CARTRIDGE	ALUMINUM BRONZE, B148	1
5	STUD	CARBON STEEL	4
6	EYENUT	CARBON STEEL	4
7 8 9	PIPE PLUG	BRASS	2, 3, 2
10▲	WASHER	STAINLESS STEEL	1▲
11	STEM RETAINER	STAINLESS STEEL	1
12 13 14	CAP SCREW	CARBON STEEL	1, 4, 1
15	VENT VALVE	BRASS	1
16	PIN	CARBON STEEL	1
17	HANDLE	DUCTILE IRON/CARBON STEEL	1
18	CAP SCREW	CARBON STEEL	1
19▲ 20▲ 21▲	O-RING	BUNA-N	2▲, 4▲, 2▲
22▲	SEAL	BUNA-N	4▲
23▲	SEAT	TEFLON	4▲
24	BALL	STAINLESS STEEL	2
25 26	STEM	STAINLESS STEEL	1, 1

NOTES:  
 1. INLET/OUTLET CONNECTIONS PER ANSI STANDARDS.  
 2. MAX. WORKING PRESSURE: 200 PSI @ 150° F (13.8 BAR @ 65.5° C)  
 3. BUSHINGS USED FOR 3/4" & 1-1/4" CONNECTIONS.

CERTIFIED FOR: --

P.O. NO.: -- QUOTE NO.: --  
 REG. NO.: -- TAG NO.: --

**FD** FACTORY DIRECT PIPELINE PRODUCTS, INC.  
<http://www.fdpp.com>

NAME MODEL 53 "BTX" - DUPLEX STRAINER  
 ANSI CLASS 150 FF FLANGE & NPT  
 SIZES 3/4" THROUGH 4" BRONZE

DRAWN VA DATE 12/16/99 CERT. WB DATE 12/16/99  
 SIZE DWG NO. A SD053082 REV K

ELECTRONIC FILE NAME: SD053082.DWG  
 REF. ECR D507 DATE 11/1/05

UNAUTHORIZED USE, MANUFACTURE OR REPRODUCTION IN WHOLE OR IN PART IS PROHIBITED. DRAWING.